



OzFlux Data

Presentation by: Everyone

Outline

What is the OzFlux Data Portal?

Current portal contents

- Audit at June 2013

OzFlux Data Portal Phase 2

- What was done?
- What are the implications?

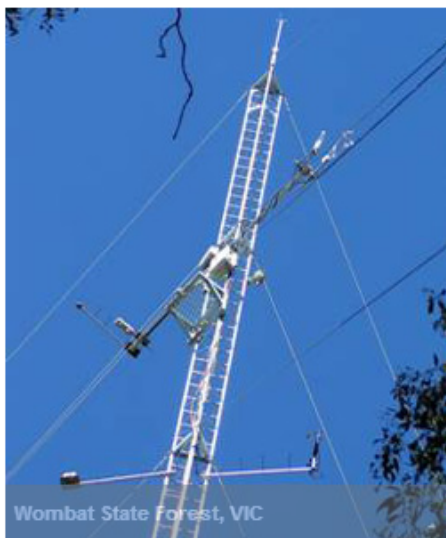
Contribution to FluxNet

- What does this mean?
- What has to be done?

WHAT IS THE OZFLUX DATA PORTAL?

What is the OzFlux Data Portal?

Repository for data collected at OzFlux towers.
Automatic feed of metadata to TERN Data
Discovery Portal, Research Data Australia.
Mechanism to share data with other researchers
and with the general public.



Welcome to the OzFlux Data Portal

OzFlux is part of the Australian Terrestrial Ecosystem Research Network (**TERN**). The OzFlux network consists of nearly 30 flux towers in Australia and New Zealand, many of which are also members of the Australian Supersite Network (**ASN**). OzFlux is also a member of the global FluxNet community.

Data from the **OzFlux** network of flux towers is available from this portal. The data are organised into collections with each collection representing at least one site.

Users can browse the contents of this portal by clicking on the **Collections** entry above and using the **Map View** or the **List View** to view the data collections.

The **Search** menu allows users to search for data based on attributes such as site name, location, period and researcher.

The **Resources** menu provides direct links to information on the data available, the data format, licence information and information on utilities for accessing the data files stored on this portal.

Users wishing to download data will need to log in to the portal. If you already have an account, click the **Login** button above. If you would like to ask for an account, click on **Register**. Registration is free and your account will normally be activated within two to three business days.



Favourites



Data Discovery Portal

Current Search

Search Term:
(ozflux) X

[Save Search](#) [Clear Search](#)

Refine Search

Advanced Boolean Search ▶

Search ecosystem data

Dates ▼

Show temporal data between :

&

Region ▼

Map Tools

Pan



Coordinates

Longitude & Latitude

Select region then 'GO'



Show locations on map

Place Name



Map View



Hybrid

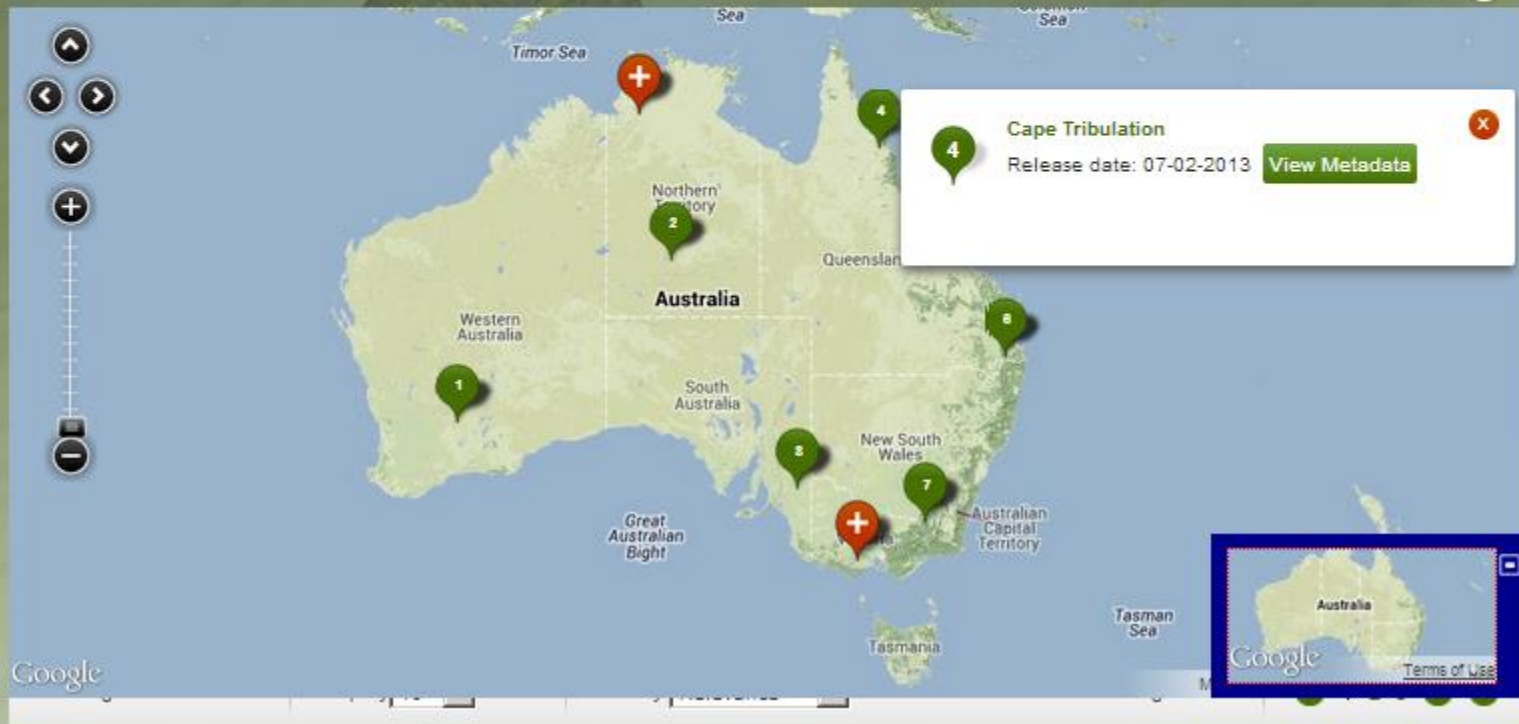
Satellite

Terrain

Help



Hide ▼



✕ ozflux



Browse by Subject Area



Browse by Map Coverage



Advanced Search

All

Collections


Parties

Activities

Services

40 results (0.203 seconds)

Page: 1/3 | First 1 2 3 Last

 **Daintree Ozflux tower site**

Data from the Daintree Discovery Tower site, Far North Queensland. Begins 20/10/2010, Ends 31/12/2012 The flux tower site is classified as tropical lowland rainforest (complex...

 **Cape Tribulation Ozflux tower site**

Data from the Cape Tribulation site (Daintree Rainforest Observatory Research Facility), Far North Queensland. Begins 06/03/2012, Ends 29/05/2012 The flux tower site is...

 **Adelaide River OzFlux tower site**

Ecosystem flux data from the Adelaide River site, Northern Territory. The Adelaide River flux station was located approximately 10.5km south east of Bachelor, Northern...

Subjects[Browse More Subjects](#)

EARTH SCIENCES (36)

ENVIRONMENTAL SCIENCES (24)

BIOLOGICAL SCIENCES (36)

Contributed By

Australian Research Council (1)

Australian Supersite Network (1)

Greenhouse Gas Monitoring (2)

Macquarie University (1)

Monash University (2)

[Show More...](#)**Type**

assemble (1)

What is the OzFlux Data Portal?

CURRENT PORTAL CONTENTS

Summary of Portal Contents

63 site-years of data

- Up from 46 site-years in February 2012

28 sites (one site per collection)

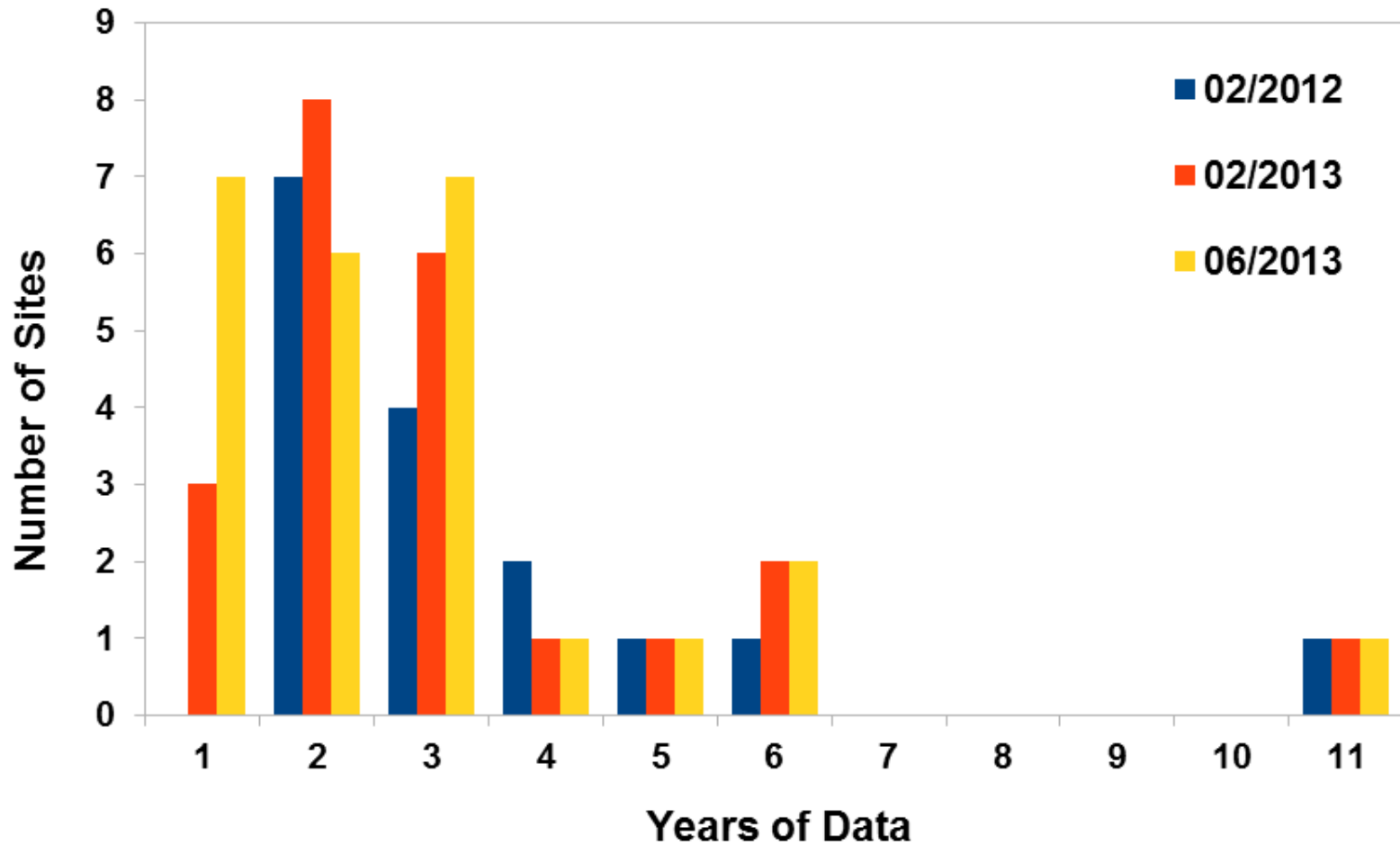
- 13 TERN-funded, 15 non-TERN funded

9 OzFlux sites are also members of the Australian Supersite Network

123 user accounts

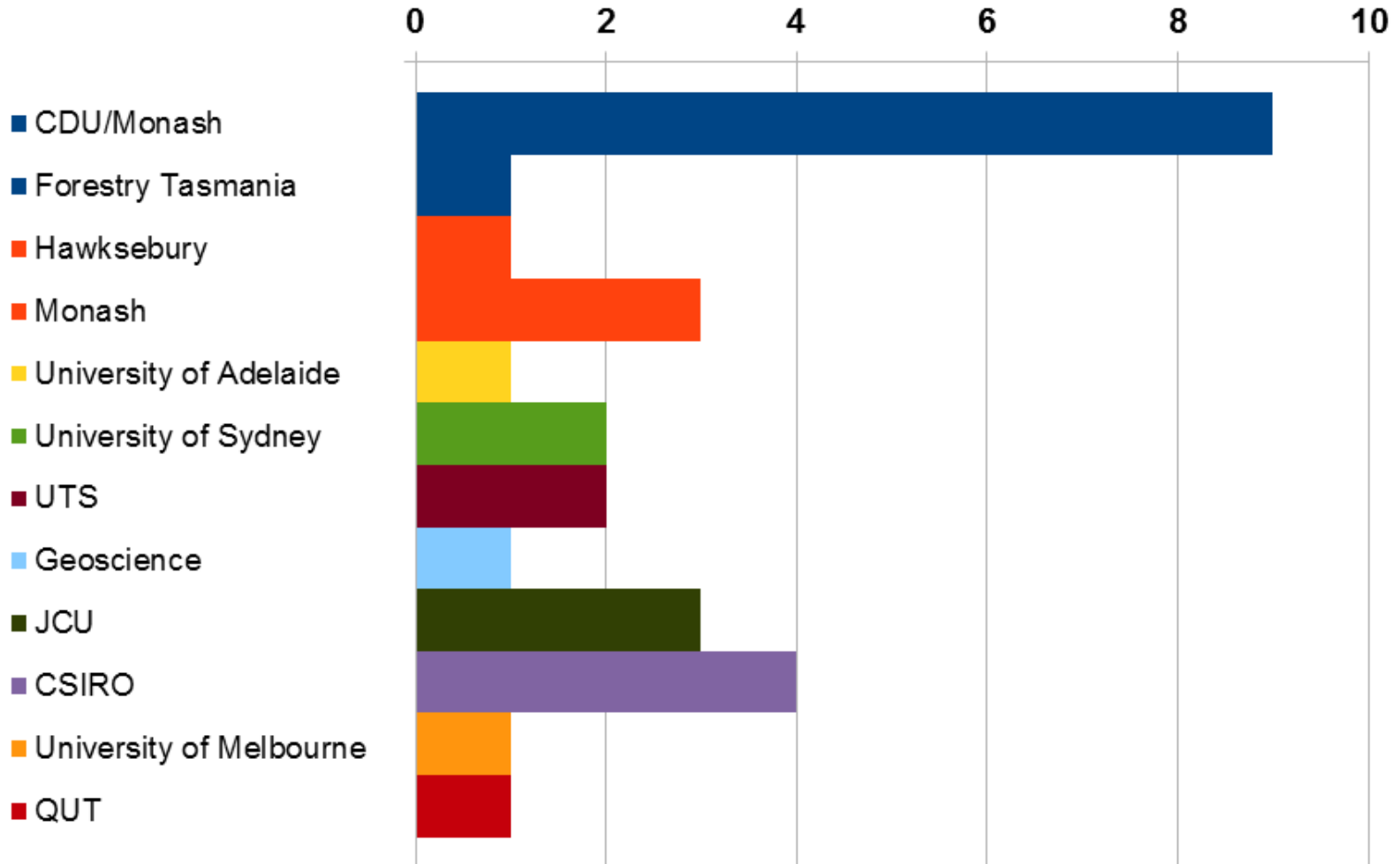
- 75% Australian, 25% international

Data Years by Site Numbers



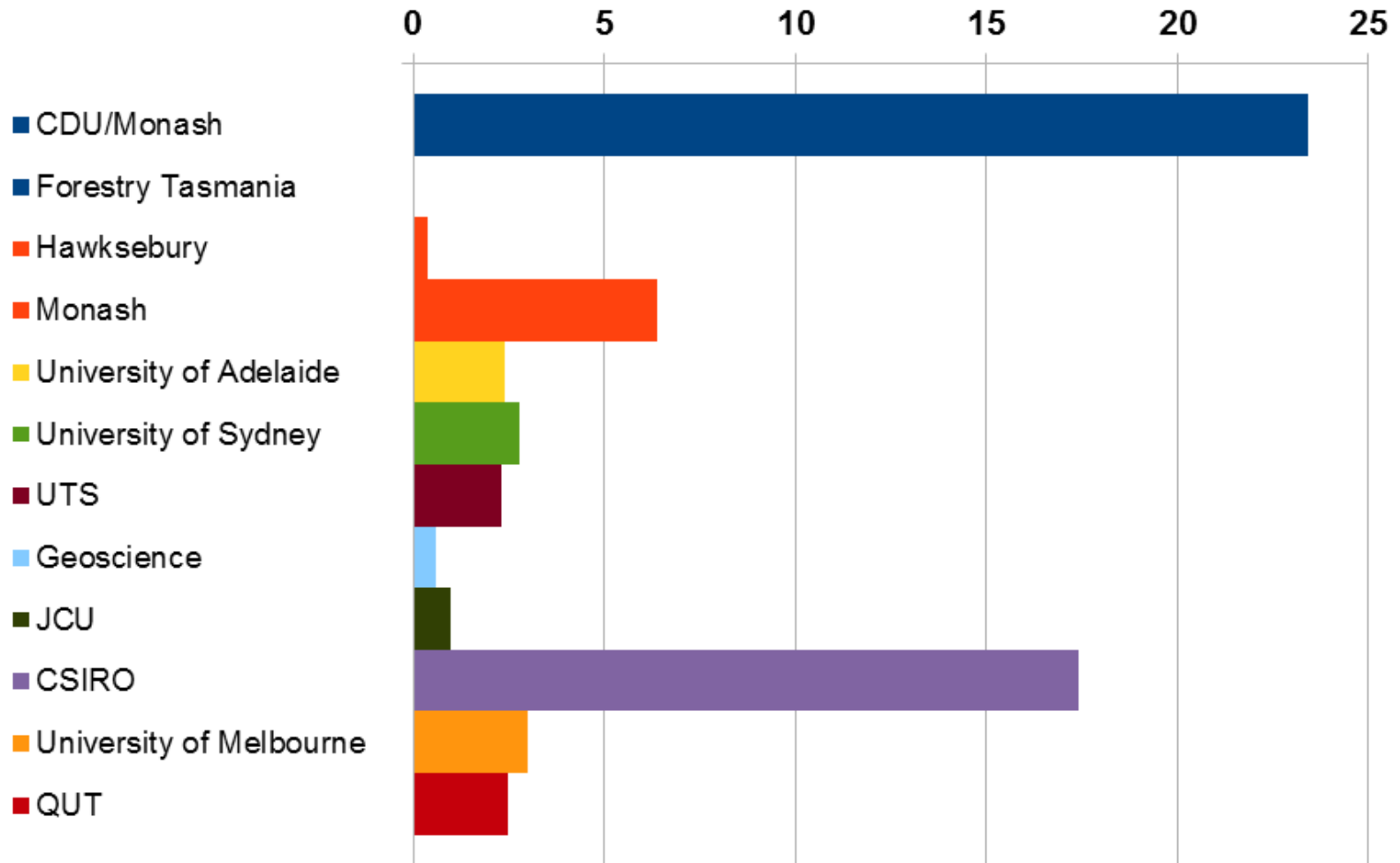
OzFlux Sites by Institution

Number of Sites

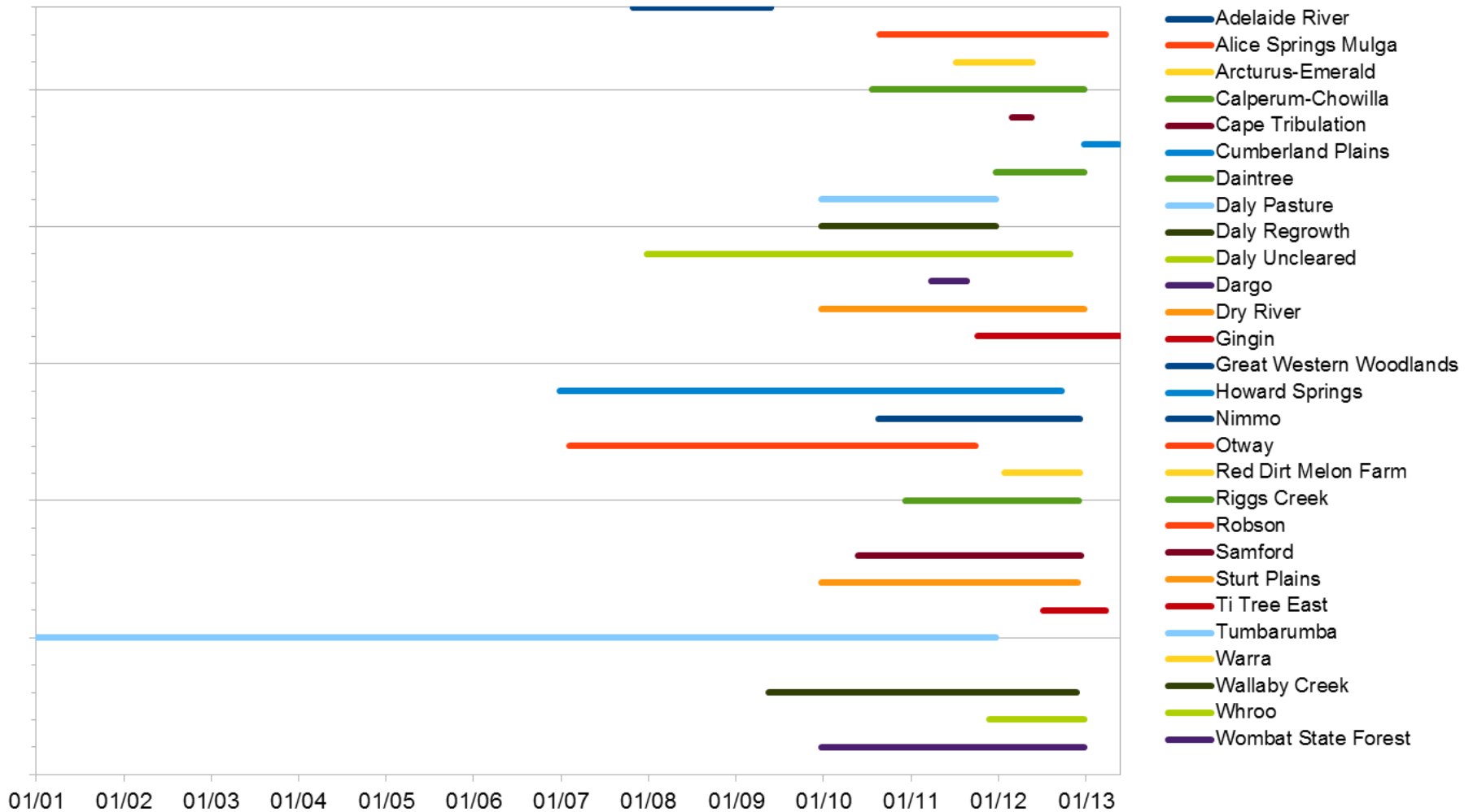


Site-years by Institution

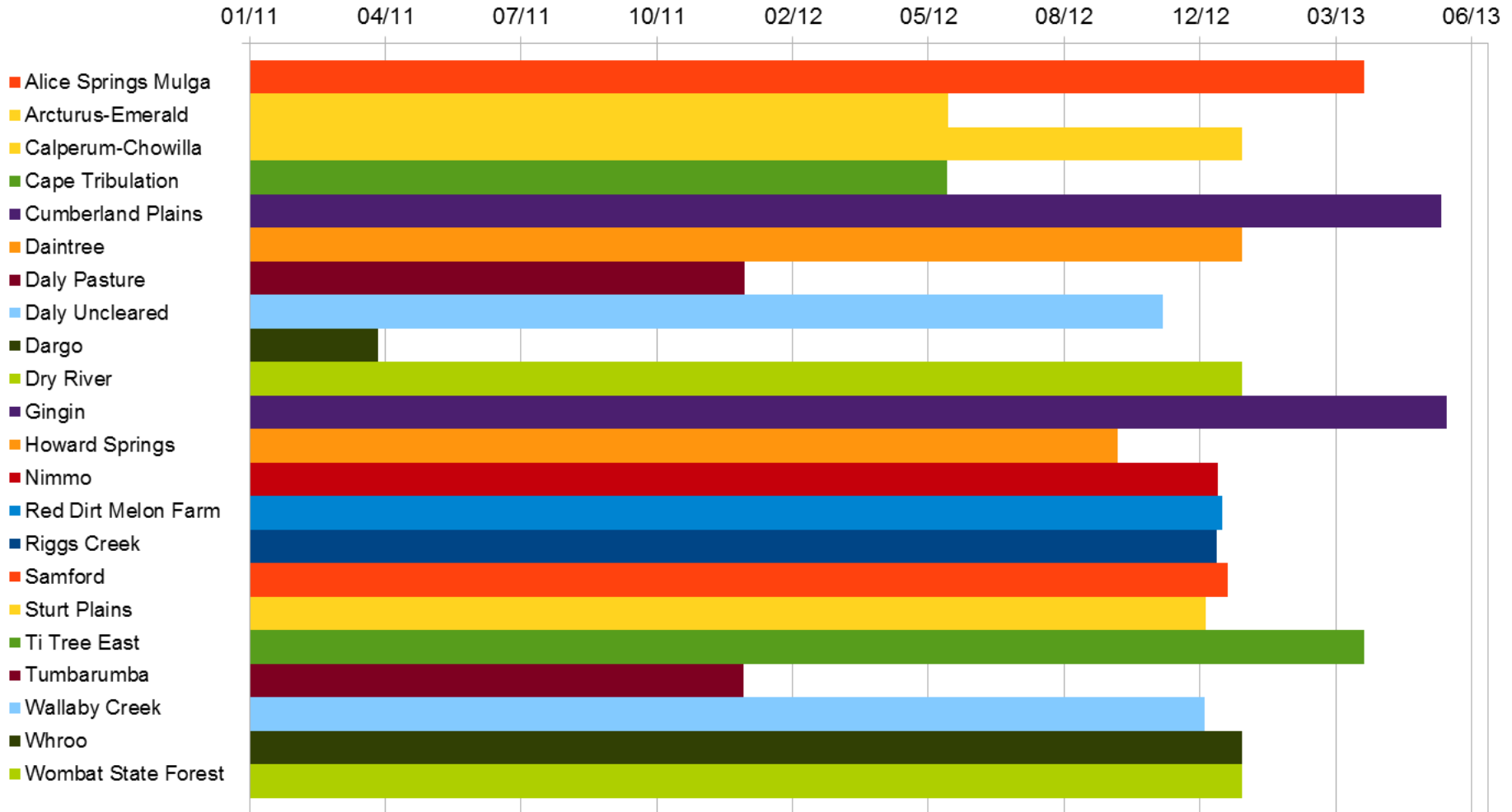
Sites Years of Data



Data Period by Site



Last Data on the Portal



What is the OzFlux Data Portal?

Current Portal Contents

OZFLUX DATA PORTAL PHASE 2

Summary of Phase 2

Usability

- Introduced “Map” view of collections
- Additional information for users
- All data collections are visible to anonymous users

Data License:

- Protects data owner’s rights when data released
- OzFlux has adopted the TERN BY-SA-NC license:
 - ❖ “BY” - attribution
 - ❖ “SA” - share alike
 - ❖ “NC” - non-commercial

Restricted Access:

- Up to 18 months to protect post-graduate student work

Restricted Access

RA is applied at the time data is uploaded to the portal:

- Intended only to protect post-graduate research.
- Intended for once only application.

In migrating from ODP Phase 1 to Phase 2, RA was applied to all data on the portal:

- Expiry date is 16th November 2014
- RA needs to be lifted for data not being used for post-graduate research
- RA needs to be lifted for historical data:
 - ❖ In theory, any data older than 18 months
In practice, any data older than 24 months

The Process for Lifting RA

Site PIs can lift RA at any time:

- Log in to portal and set the RA expiry date to the next day.

OzFlux data manager will contact site PIs:

- I will contact PIs over the next 2 months to negotiate lifting RA on as much data as possible.

TERN will insist we comply.

What is the OzFlux Data Portal?

Current Portal Contents

OzFlux Data portal Phase 2

CONTRIBUTION TO FLUXNET

OzFlux in FluxNet

FluxNet (<http://fluxnet.ornl.gov/>) is the global network of ecosystem flux towers:

- ~500 sites

FluxNet Synthesis Database

- 2007 La Thuile synthesis
- 2010 Berkley synthesis
 - ❖ The Berkley synthesis has not been released yet
 - ❖ The opportunity exists for OzFlux sites to contribute
 - ❖ Howard Springs, Fogg Dam and Tumbarumba

Contributing to the Berkley Synthesis

FluxNet will accept OzFlux L3 netCDF files:

- OzFlux QC/post-processing system will produce CSV files in the FluxNet format.
- Current proposal is to allow OzFlux to contribute until the end of July.

FluxNet is covered by a “data policy”:

- This is not a license, OzFlux will investigate using the TERN BY-SA-NC license.
- The OzFlux Fair Use Data Policy is based on FluxNet Free Access policy

RA to be lifted for OzFlux data contributed to FluxNet

What is the OzFlux Data Portal?

Current Portal Contents

OzFlux Data portal Phase 2

Contribution to FluxNet

SUMMARY

Summary

Data submission to the ODP is very good:

- Re-processing and keeping up to date.

Phase 2 of the ODP development complete:

- Usability and data license.
- Need to lift RA on data.

Contribution to FluxNet:

- OzFlux may still be able to contribute to the Berkley synthesis.
- Contact Peter Isaac for information on contributing

Thanks

Ray for everything he has ever done.

Helen and Eva for everything they are doing.

Everyone involved for their continuing efforts to make OzFlux work.